

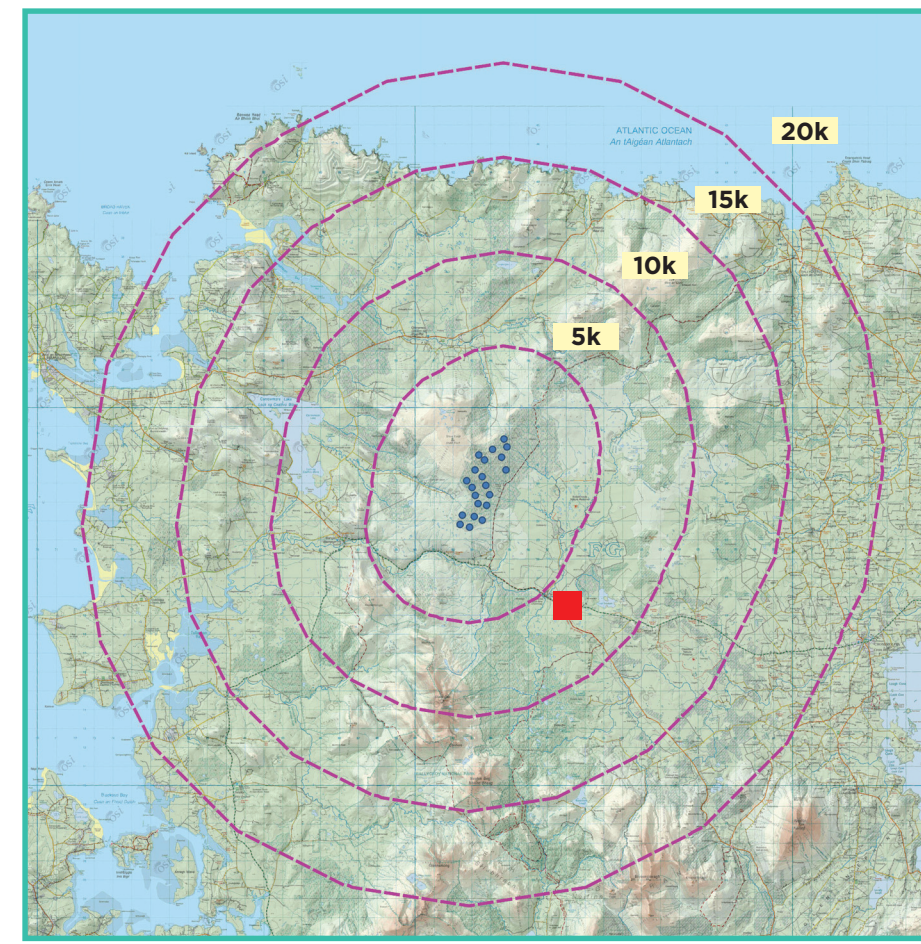
View Point 9

Moneynierin

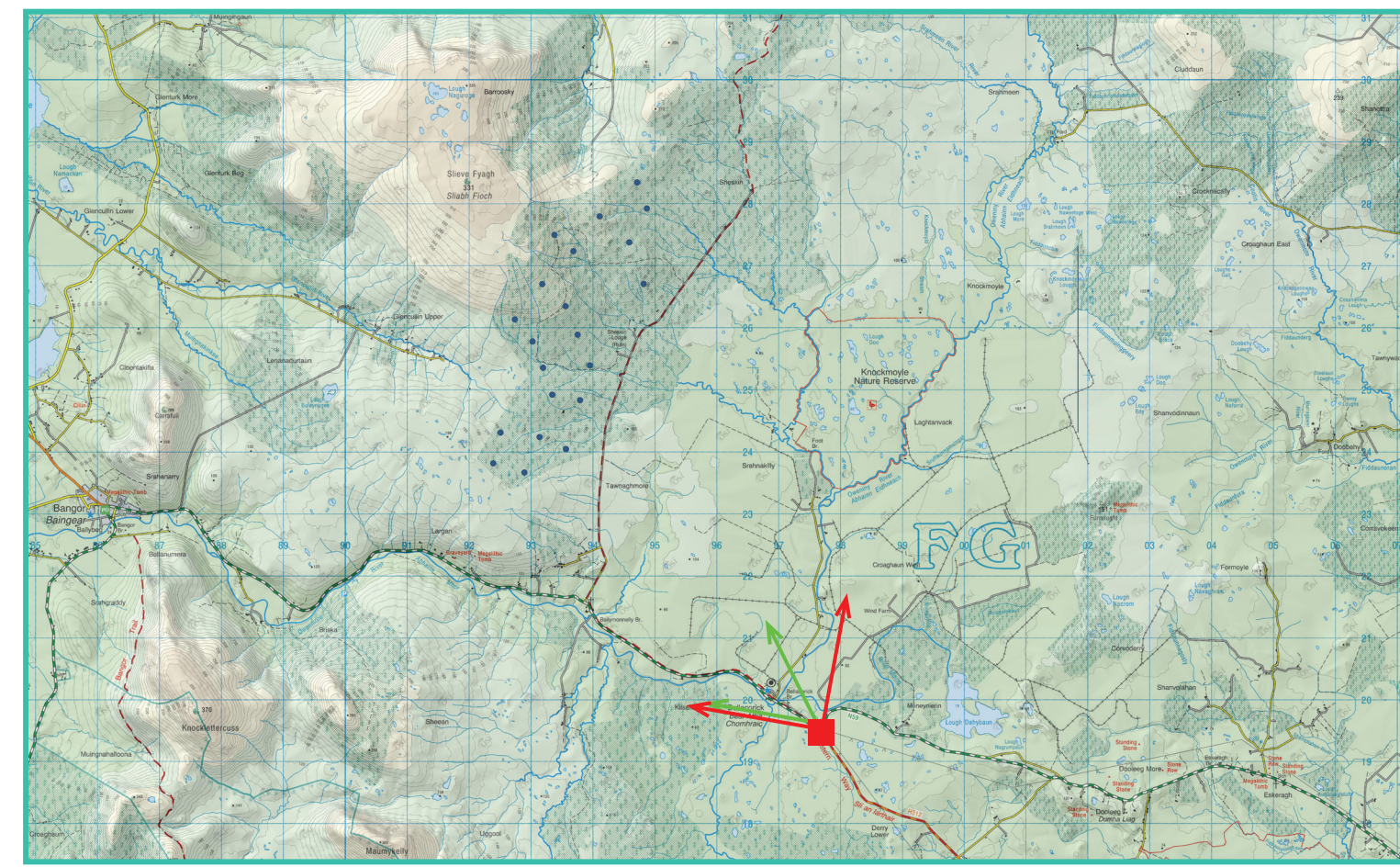
Photomontage 9

View Point: View from the R312 Regional Road, in the townland of Moneynierin. The Viewpoint is located on the 'Western Way' way marked walking trail. It is located approximately 6 km south-east of the nearest proposed turbine.

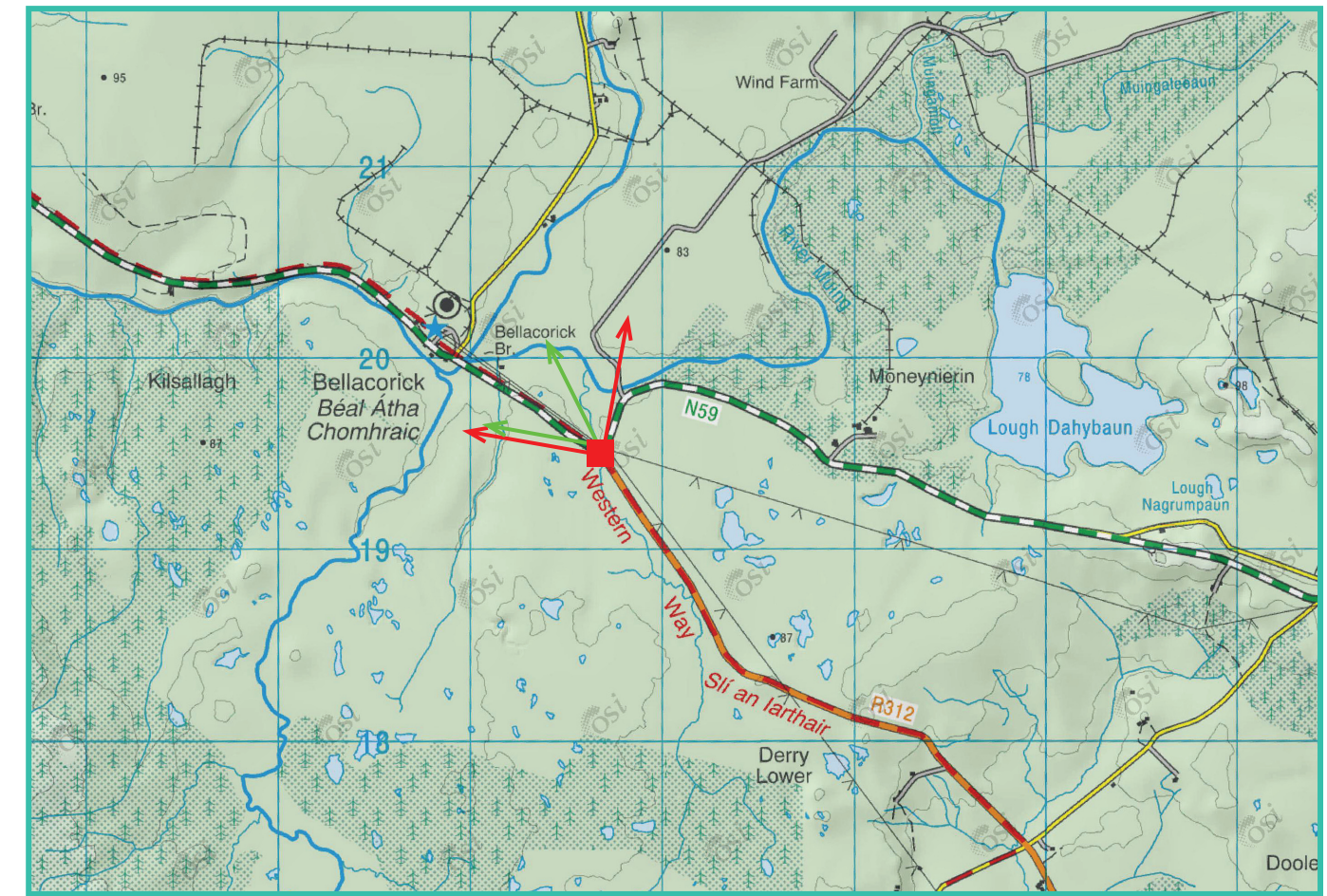
View point grid reference	497,660(E); 819,485(N)
Date of image taken	29.9.2021
Time of image taken	11:07am
View point elevation	81m
Angle of Views	90° / 53.5°
View Direction (Image Centre)	349° / 325°
Horizontal extent of proposed turbines	32°
Distance to nearest proposed turbine	6km (T1)
Number of proposed turbines visible	21/21
Turbine Hub Height	115m
Turbine Tip Height	200m
Turbine Rotor Diameter	170m
Montage Type	Type 4* : Photomontage / Photowire / Survey / Scale Verifiable
Camera & Lens	Canon 5D Mark III / Full Frame Sensor with a 50mm Lens
Tripod	Manfrotto 190X extended to approx 1.5m.
Guidance	* Visual Representation of Development Proposals, Landscape Institute Technical Guidance Note 06/19, 2019
Map Licence	© Ordnance Survey Ireland. All rights reserved. Licence number CYAL50267517



View point relative to 20km radius.



View point relative to wind farm site.



Detail of view point location.

Map Legend

- Area shown in 90° view
- Area shown in 53.5° view
- View Point

Wireframe Legend

- Proposed Wind Farm
- Permitted Wind Farms
- Existing/Operational/Under Construction Wind Farms
- Other Proposed Wind Farms

Prepared by

MKO
 Planning & Environmental Consultants
 Tuam Road, Galway.
 Tel: (091) 73 56 11
 E-mail: info@mkofireland.ie
 Website: www.mkofireland.ie

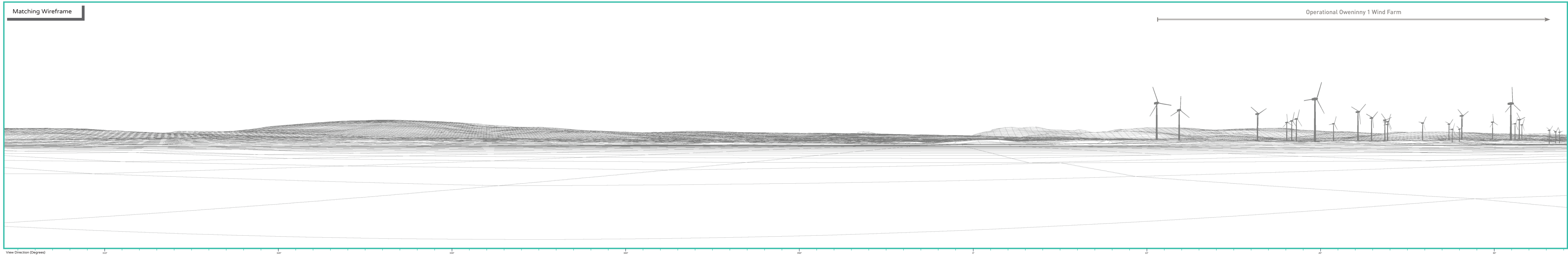


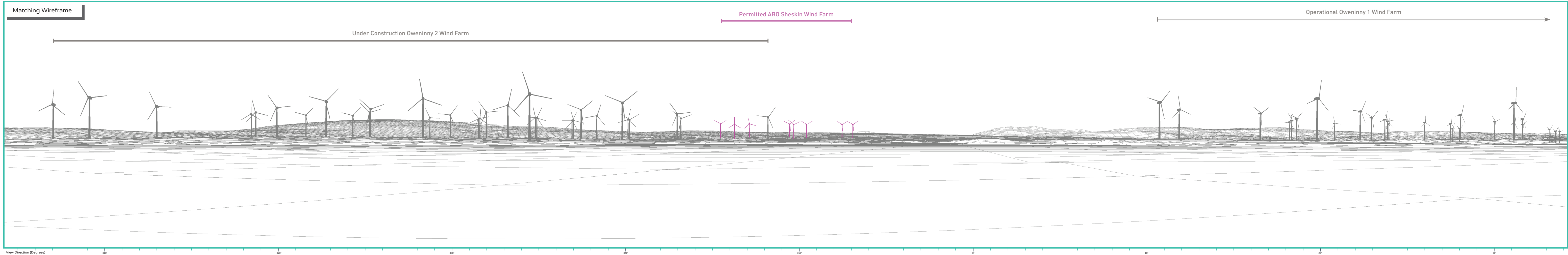
90° View Extent

Existing View Image at 120°



53.5° View Extent

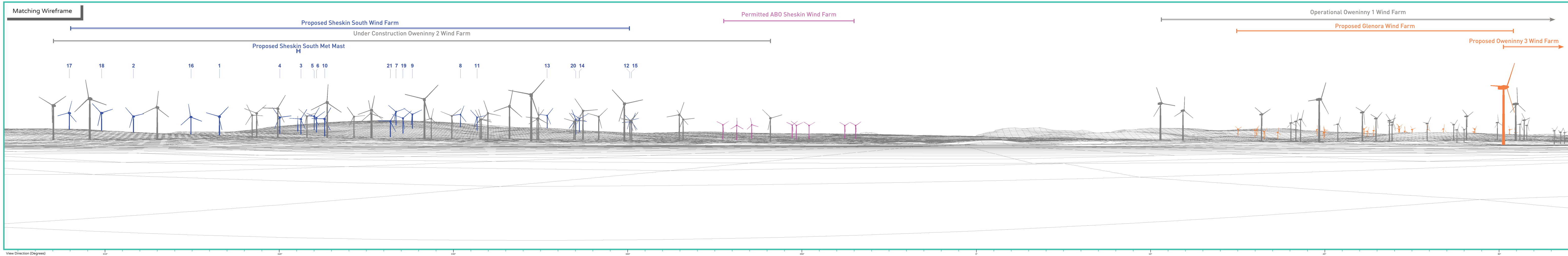




Proposed Photomontage with Cumulative at 90°



Matching Wireframe



Proposed Photomontage with Cumulative at 53.5°



<p>N59 Baingear BANGOR</p>	<p>Béal an Átha BALLINA N59</p>
<p>km 33 Béal an Mhuirthead</p>	<p>Crois Mhaoiliona km CROSSMOLINA 17</p>

Matching Wireframe

